



MAKE YOUR WAREHOUSES SMART USING AI-ENABLED VIDEO ANALYTICS

Challenges for Logistics Operators



Limited insight into on-ground operations, leading to increased deviation from established SOPs



Decisions on resource utilisation like real estate, workforce and equipment are based on intuition rather than real data.



Analytics is mostly done manually, which means low scalability, high costs and low turn around times



Increased losses and lost potential revenue due to damages, lack of accountability, stock-outs etc.



We give you **Eyes!**

Automate most monitoring tasks

Increase decision making ROI and Impact

Save upto 50% in manpower and monitoring costs

Improve compliance to SOPs by 70%

Enhance physical security by 50%

Increase operational efficiency by identifying bottlenecks



Why Video Analytics?

Reduces cost and increase efficiency

Stay compliant and explore innovative solutions to manage costs while leveraging existing investments in camera installations.

Automate operations and improve performance

We partner with you to limit risk and boost performance

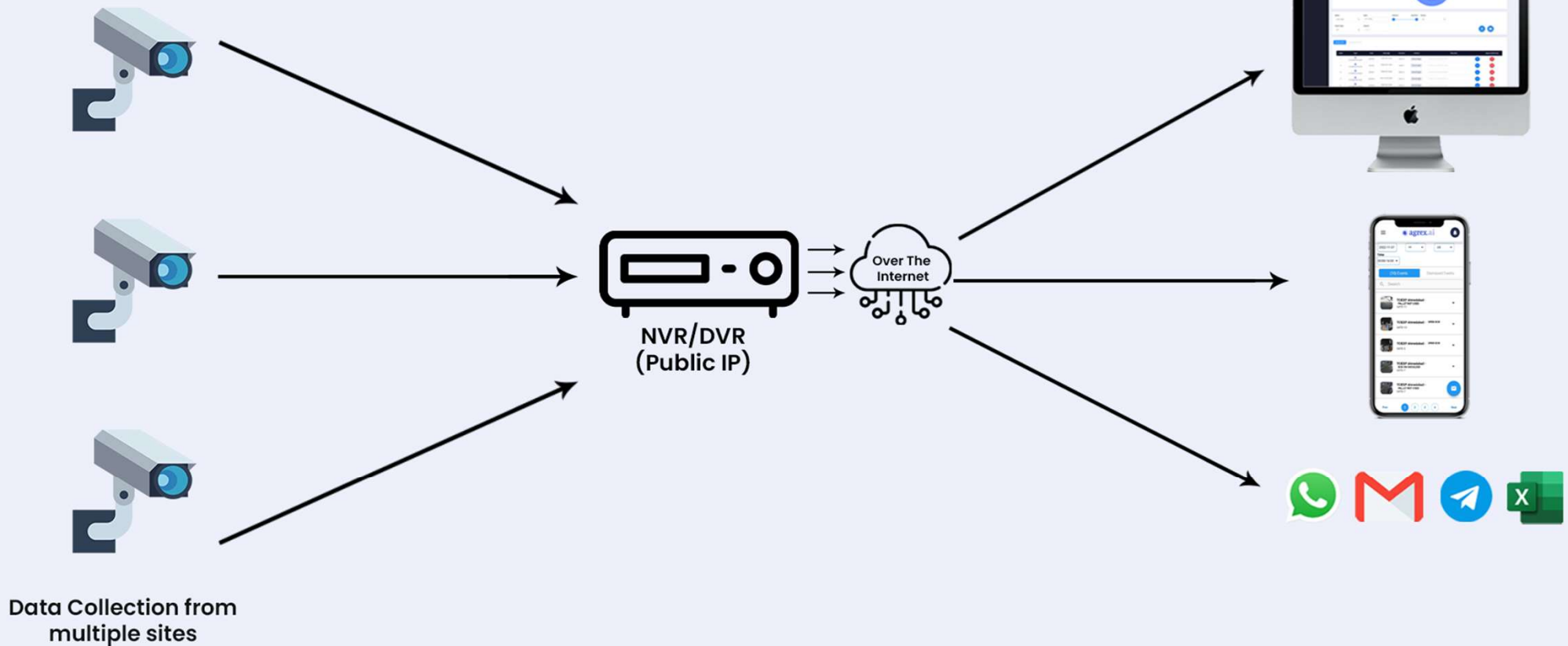
Transform into a smart and secure warehouse

Make your warehouse smart & secure with real-time data on operations and performance.

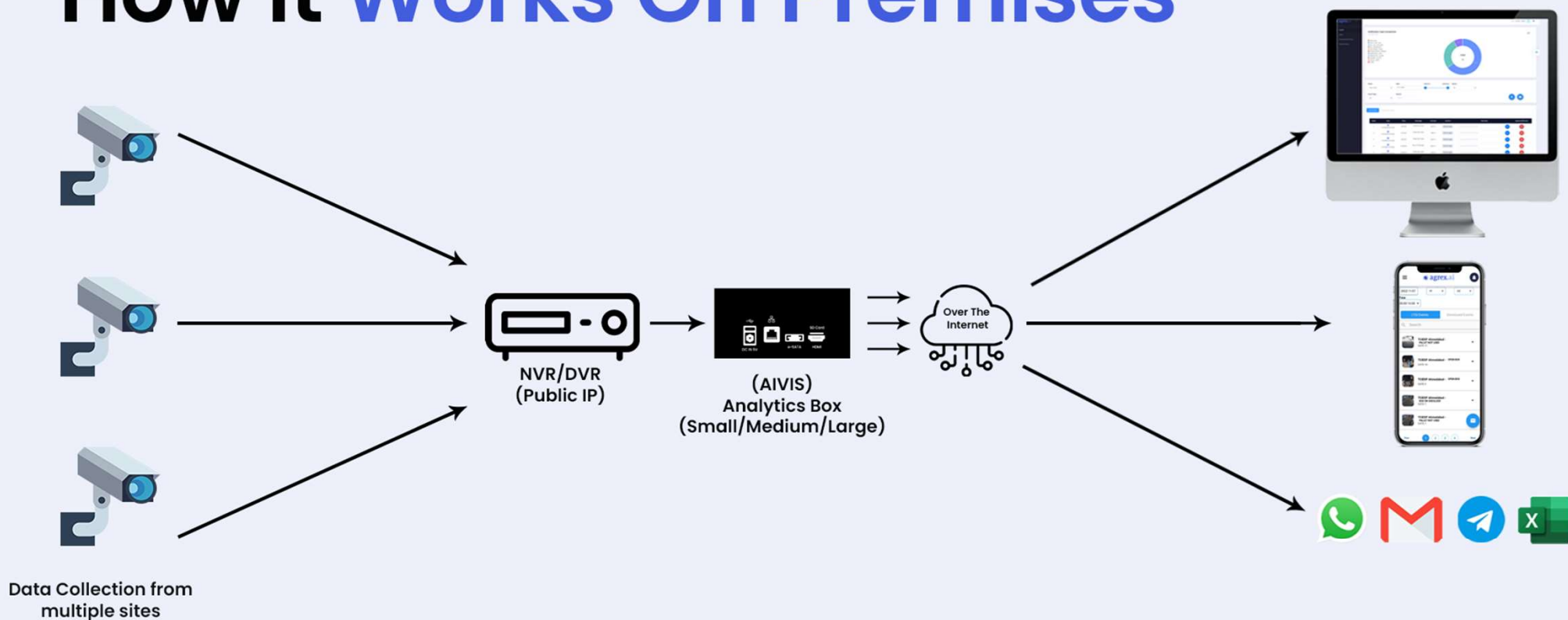
Increase customer satisfaction and turn-around times

Keep your customers satisfied with improved performance.

How It Works On Cloud



How It Works On Premises



Logistics Use Case

Opening of boxes



Vehicle Loading / Unloading



SuperVisor Not Present



Standing on Box



Box on Shoulder



Pallet Not Used



Truck In



Throwing of Box



Logistics Use Case

● **agrex.ai**

Uncovered Truck



Intrusion Detection



Blackout



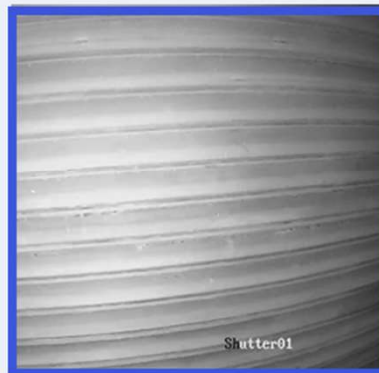
Blur Image



Unauthorised Access



Warehouse Closed Alert



Warehouse Open Alert



Social Distancing



Privileged and Confidential

Logistics Use Case



Sitting On Conveyor Belt



Sitting on Box



Box Dropped on conveyor belt



Tarpaulin Uncover Truck



Logistics Use Case

Standing on Conveyor belt



Intrusion



Box Mishandling



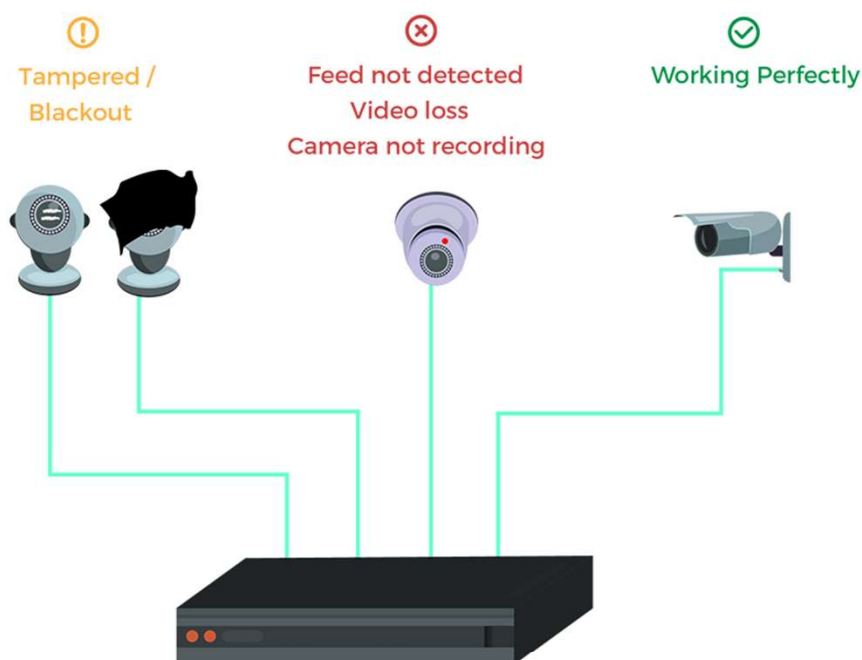
Suspicious activity



Box Fallen From conveyor belt



Why Us?



- Best-in-class accuracy and competitive pricing
 - 95%+ Footfall, 99%+ Gender, 90%+
- Staff Exclusion based on face or dress-code
- Connectivity with Wi-Fi, LAN, or SIM
- Data Storage and Backup in case of power outages, internet outages etc.
- Integrations like POS systems to generate more insights
- Ease of installation
- Works with existing infrastructure
- GDPR and other privacy laws compliant
- International Presence
- Real-Time Information
- Data Security
- State-of-the-art Performance
- Fast Support
- Easy Deployment

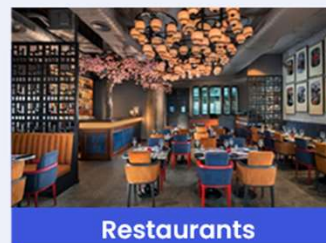
Examples of few verticals we work with



Border Protection



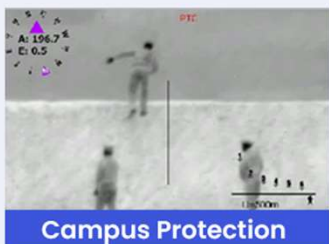
Warehouses



Restaurants



Retail Stores



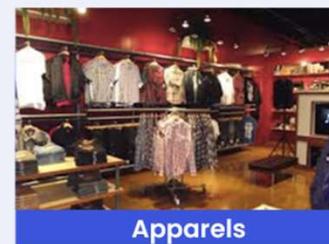
Campus Protection



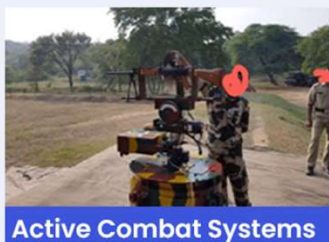
Perimeter Security



Factories



Apparels



Active Combat Systems



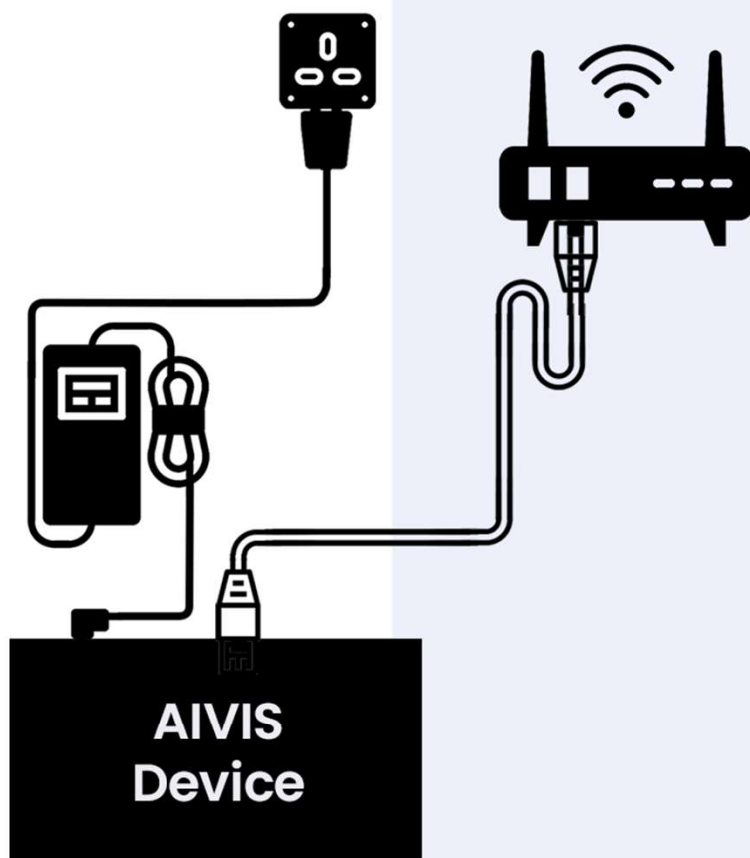
ATM Security



Hospitality



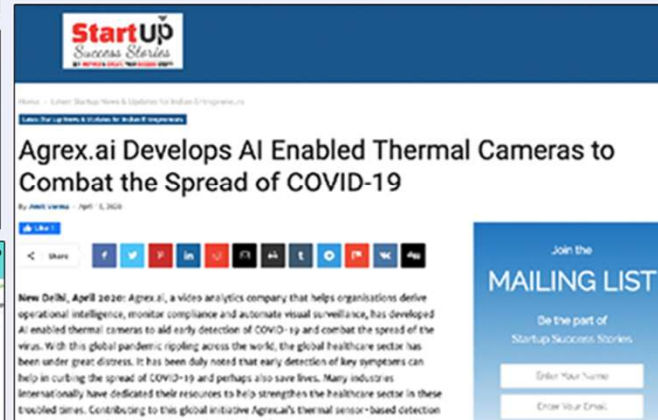
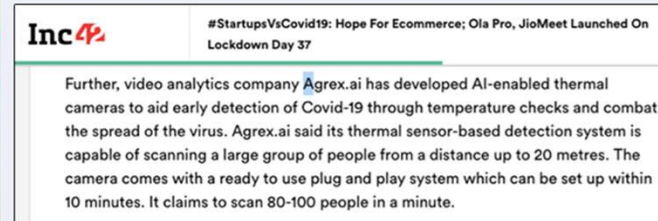
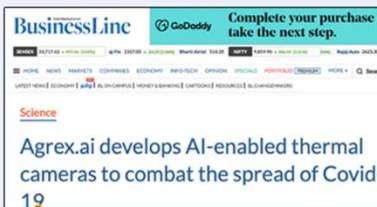
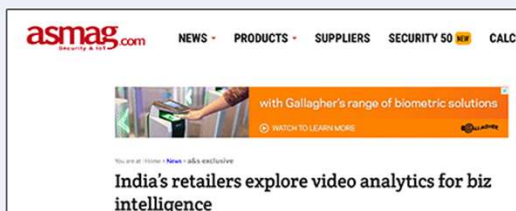
Supermarkets



Support and Installations

- Installation Infrastructure PAN India in major cities.
- Each store installation takes 30mins - 1 hour
- Currently, ~30,000 cameras enabled
- Manual Monitoring for Accuracy in new installations

Media Coverage



Privileged and Confidential

Thank You :)



Arush Kakkar

CEO - Agrex.ai

Request a call **9953575169** | Mail to **arush@agrexai.com**



agrexai.com

Privileged and Confidential

Disclaimer: This document has been prepared by Agrex Technologies Private Limited (hereinafter referred to as “Agrex.ai” or “Company”) for investors, solely for informational purposes. Any person who does not qualify must not view the document, must return the document to the Company immediately and should not read or act upon any of the information contained within it.

The information contained herein has been prepared to assist prospective investors in making their own evaluation of the Company and does not purport to be all-inclusive or to contain all of the information a prospective or existing investor may desire. In all cases, interested parties should conduct their own investigation and analysis of the Company and the data set forth in this information. The Company makes no representation or warranty as to the accuracy or completeness of this information and shall not have any liability for any representations (express or implied) regarding information contained in, or for any omissions from, this information or any other written or oral communications transmitted to the recipient in the course of its evaluation of the Company. Any financial projections given are illustrative only and none of the projections or assumptions should be taken as promises on the part of the Company nor should they be taken as implying any indication, assurance or guarantee that loose assumptions are correct or exhaustive.

This information includes certain statements and estimates provided by the Company with respect to the projected future performance of the Company. Such statements, estimates and projections reflect various assumptions by management concerning possible anticipated results, which assumptions may or may not be correct. No representations are made as to the accuracy of such statements, estimates or projections. Prospective investors will be expected to have conducted their own due diligence investigation regarding these and all other matters pertinent to investment in the Company. This presentation may contain statements that are not historical facts, referred to as “forward-looking statements.” The Company’s actual future results may differ materially from those suggested by such statements, depending on various factors.

Privileged and Confidential