



**MAKE YOUR RETAIL STORE SMART USING AI-ENABLED VIDEO ANALYTICS**

# Challenges for Retail Store



Limited insight into on-ground operations, leading to increased deviation from established SOPs



Decisions on resource utilisation like real estate, workforce and equipment are based on intuition rather than real data.



Analytics is mostly done manually, which means low scalability, high costs and low turn around times



Increased losses and lost potential revenue due to damages, lack of accountability, stock-outs etc.

# We help Facilities see

Use Face Analytics to collect data on customers (Age, Gender, Loyalty)

We also collect data on the expressions of customers (Happy, Sad, Angry Neutral etc)

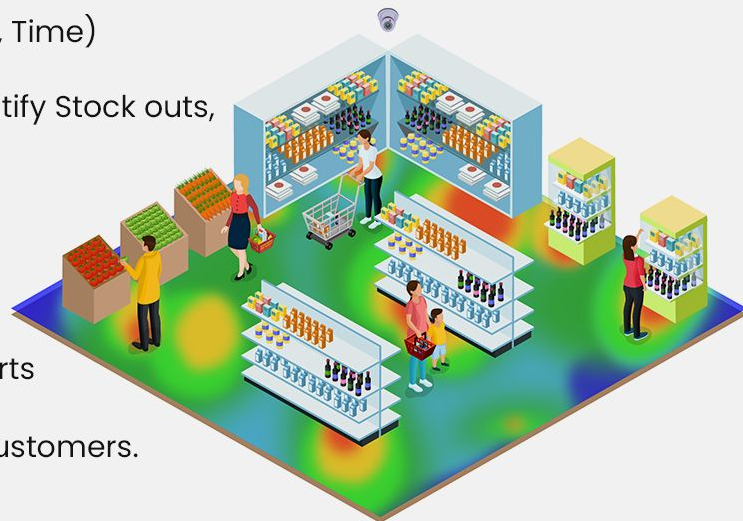
Collect data about the behaviour of visitors (Heatmaps, Shelf Analytics, Time)

Identify operational bottlenecks (Queue Length Alerts, Congestion, Identify Stock outs, Cleanliness)

Prevent Shrinkage :

- Suspicious Behaviour and Face Recognition for burglars
- Identify Staff related shrinkage
- Identify unusual/anomalous activity to enhance Loss Prevention efforts

Security and Safety Related Features; Ensure that the store is safe for customers.



# We give you **Eyes!**

Automate most monitoring tasks

Increase decision making ROI and Impact

Save upto 50% in manpower and monitoring costs

Improve compliance to SOPs by 70%

Enhance physical security by 50%

Increase operational efficiency by identifying bottlenecks



# Why **Video Analytics**?



## **Reduces cost and increase efficiency**

Stay compliant and explore innovative solutions to manage costs while leveraging existing investments in camera installations.

## **Automate operations and improve performance**

We partner with you to limit risk and boost performance

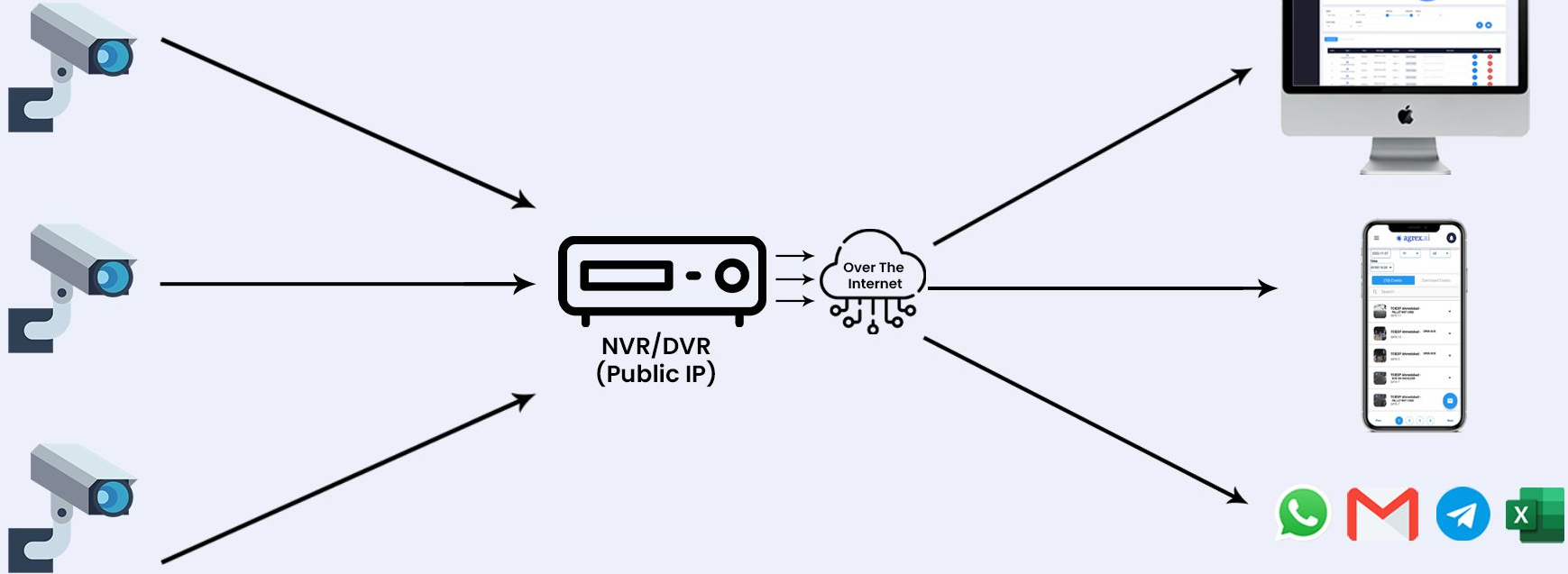
## **Transform into a smart and secure retail store**

Make your retail store smart & secure with real-time data on operations and performance.

## **Increase customer satisfaction and turn-around times**

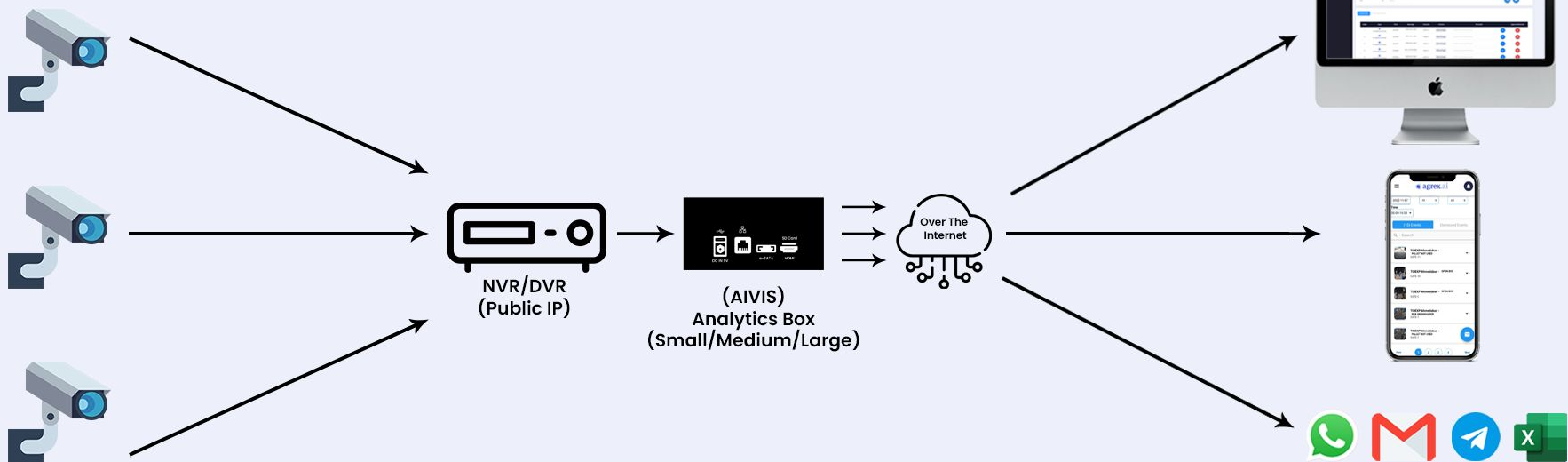
Keep your customers satisfied with improved performance.

# How It Works On Cloud



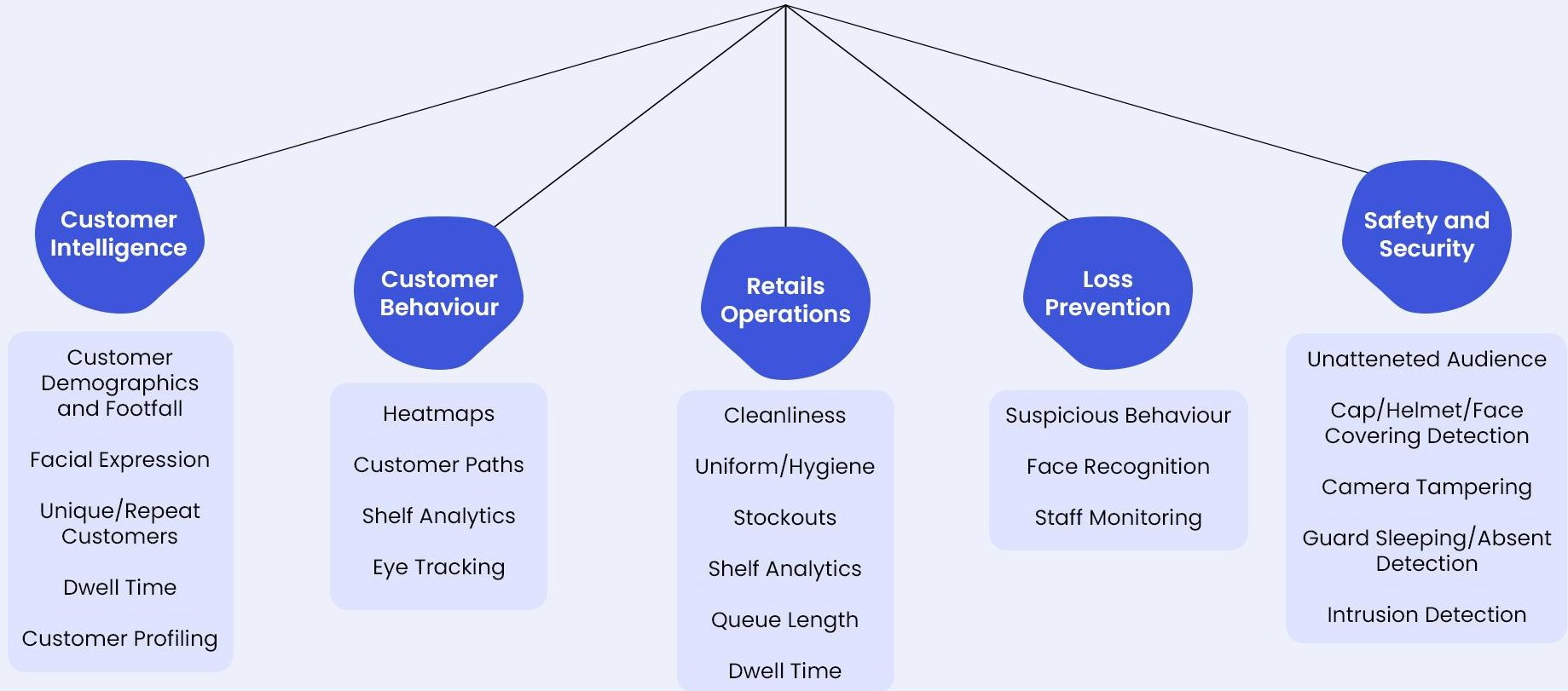
Data Collection from multiple sites

# How It Works On Premises



Data Collection from multiple sites

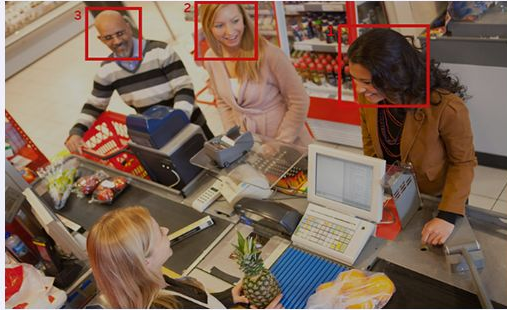
# Operational Areas and Features





# Retail Use Case

People Count



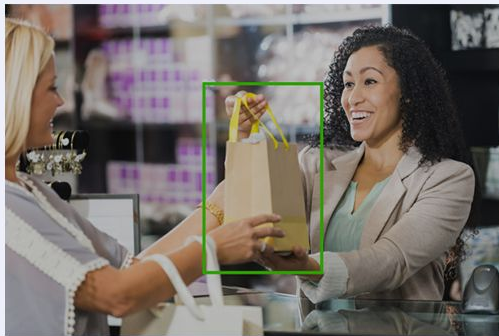
Track Customer Behaviour



Tracking Customers Paths



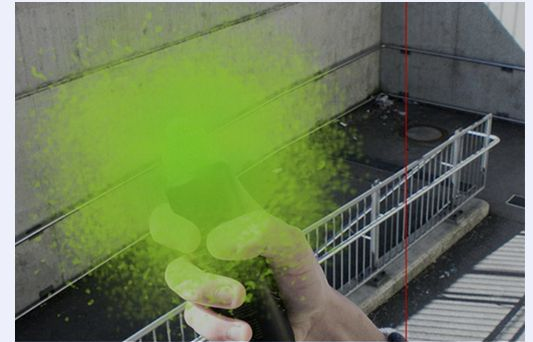
Detects Objects taken Or Left Behind



Identify products getting sold out

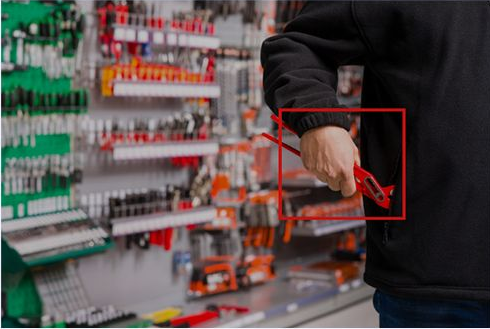


Recognizes Camera Tampering



# Retail Use Case

Detects Suspicious Movement



Identifies Smoke, Fire, & Other Dangerous Anomalies



Queue Management



Inventory Management



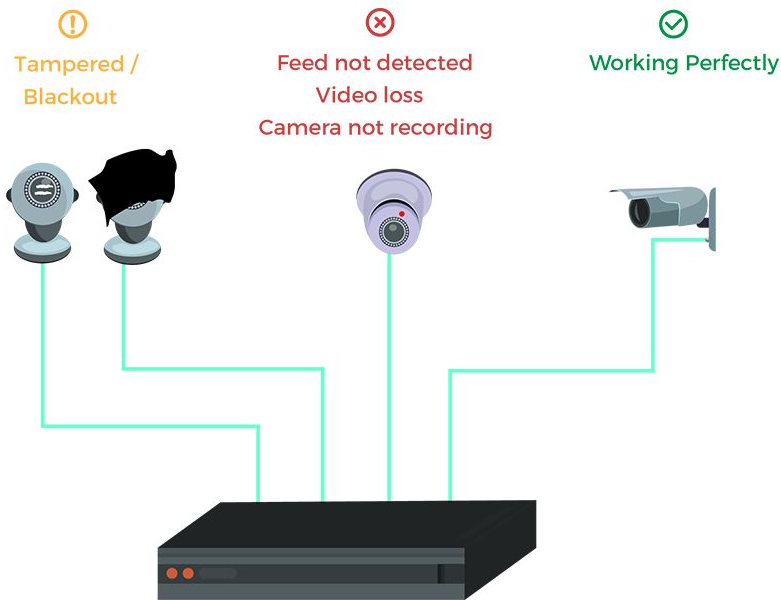
Camera Blackout



NVR Offline



# Why Us?



- Best-in-class accuracy and competitive pricing
  - 95%+ Footfall, 99%+ Gender, 90%+
- Staff Exclusion based on face or dress-code
- Connectivity with Wi-Fi, LAN, or SIM
- Data Storage and Backup in case of power outages, internet outages etc.
- Integrations like POS systems to generate more insights
- Ease of installation
- Works with existing infrastructure
- GDPR and other privacy laws compliant
- International Presence
- Real-Time Information
- Data Security
- State-of-the-art Performance
- Fast Support
- Easy Deployment

# Examples of few verticals we work with



Border Protection



Warehouses



Restaurants



Retail Store



Campus Protection



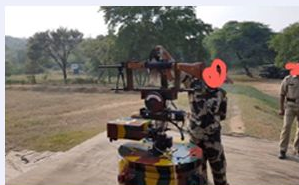
Perimeter Security



Factories



Apparels



Active Combat Systems



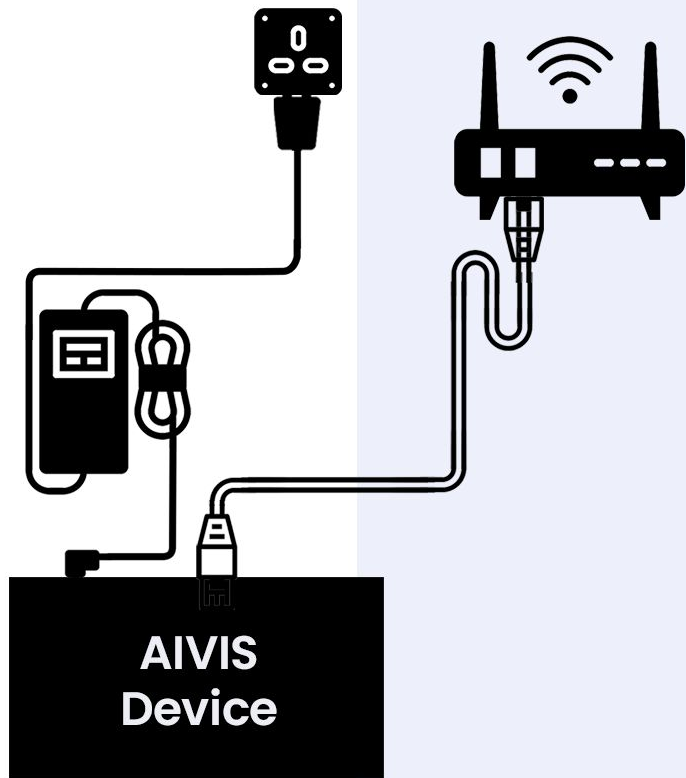
ATM Security



Hospitality



Supermarkets



# Support and Installations

- Installation Infrastructure PAN India in major cities.
- Each store installation takes 30mins - 1 hour
- Currently, ~30,000 cameras enabled
- Manual Monitoring for Accuracy in new installations

# Media Coverage



**asmag.com** NEWS · PRODUCTS · SUPPLIERS · SECURITY 50 NEW CALC

with Gallagher's range of biometric solutions

India's retailers explore video analytics for biz intelligence

**Stuff** HOT STUFF NEWS REVIEWS FEATURES TOP 10s WIN

**Agrex introduces thermal AI-based human temperature monitoring system to battle against COVID-19**

Non-intrusive thermal scanning from as far as 20 metres



**Startup Success Stories** home about us innovation & startups news & events resources contact

**Agrex.ai Develops AI Enabled Thermal Cameras to Combat the Spread of COVID-19**

By Ansh Kulkarni April 14, 2020

Join the MAILING LIST

Be the part of Startup Success Stories

Enter Your Name

Enter Your Email

Subscribe

recent posts

Shrihari Agureya Greya Unleashes Thermal Cameras to India

IoT India Launches: The IoT Future Tech Panel!

**EXPRESS COMPUTER**

AI based fever detection for coronavirus screening

A novel detection technology using thermal sensor-based cameras has been developed by Indian startup Agrex.ai, covering human temperature processing, artificial intelligence and data analytics.

**Enterprise IT WORLD**

HOME NEWS CATEGORY INFRASTRUCTURE INDUSTRY 4.0 JOICIO CONNECT EVENTS WEBINARS COVID 19

SUBSCRIBE TO OUR NEWSLETTER

Name

**Agrex.ai Develops AI Enabled Thermal Cameras to Combat the Spread of COVID-19**

by EntrepreneurMag April 17, 2020

**Inc42** #StartupsVsCovid19: Hope For Ecommerce; Ola Pro, JioMeet Launched On Lockdown Day 37

Further, video analytics company Agrex.ai has developed AI-enabled thermal cameras to aid early detection of Covid-19 through temperature checks and combat the spread of the virus. Agrex.ai said its thermal sensor-based detection system is capable of scanning a large group of people from a distance up to 20 metres. The camera comes with a ready to use plug and play system which can be set up within 10 minutes. It claims to scan 80-100 people in a minute.

**THE TIMES OF INDIA**

Dress codes to mood swings, startups say AI

Startups that support the lockdown

HOW IT WORKS

**GIZBOT** NEWS · REVIEWS · FEATURES · GALLERY · VIDEOS · NEW DEVICES

FOR QUICK ALERTS SUBSCRIBE NOW

**This AI-Powered Thermal Camera To Help Fight COVID-19**

By iWEEK Published: Thursday, April 30, 2020, 19:39:20

AI is being used as one of the primary tools in detection and controlling COVID-19 across the globe. It is extensively put to work to analyse the data collected by various means. Agrex.ai - a video analytics company has now come up with a smart thermal camera to combat coronavirus.

WHO WE ARE | PARTNERS | HIRING OPPORTUNITIES | EVENTS | VIDEOS | PHOTOGRAPHS | IN COLLABORATION | CONTACT US

**Praxi** For July 2022 Issue

**Agrex.ai Develops AI-Enabled Thermal Cameras To Combat The Spread Of COVID-19**

PUBLISHED ON APRIL 20, 2020 IN NEWS

**Startup Success Stories** home about us innovation & startups news & events resources contact

**Agrex.ai Develops AI Enabled Thermal Cameras to Combat the Spread of COVID-19**

By Ansh Kulkarni April 14, 2020

Join the MAILING LIST

Be the part of Startup Success Stories

Enter Your Name

Enter Your Email

recent posts

Shrihari Agureya Greya Unleashes Thermal Cameras to India

IoT India Launches: The IoT Future Tech Panel!

**siliconindia** NEWS Home Technology Startup Startup Jobs Categories About Us

Agrex.ai: End to End AI Solutions

by Ansh Kulkarni Founder @ Inc42

ONLINE - The Independent

**FORTUNE BUSINESS INSIGHTS**

Hardware & Software IT Services AI-Based Fever Detection Camera Market Smart Strategies, Giving Speed to your Growth Trajectory

AI-Based Fever Detection Camera Market Size, Share & Industry Analysis, By Type (Turret/Bullet Cameras, and Handheld Cameras), by End-User (Airports, Hospitals, Public Places, Enterprises/Factories, Banks, and Others), and Regional Forecast, 2020-2027

Region: Global | Format: PDF | Report ID: FBI210293

Share

PUBLISHED ON: 2021

BASE YEAR: 2021

HISTORICAL DATA:

**BusinessLine** Complete your purchase to take the next step.

**Agrex.ai develops AI-enabled thermal cameras to combat the spread of COVID-19**

# Thank You :)



**Arush Kakkar**

CEO - Agrex.ai

Request a call **9953575169** | Mail to **arush@agrexai.com**



agrexai.com

Disclaimer: This document has been prepared by Agrex Technologies Private Limited (hereinafter referred to as “Agrex.ai” or “Company”) for investors, solely for informational purposes. Any person who does not qualify must not view the document, must return the document to the Company immediately and should not read or act upon any of the information contained within it.

The information contained herein has been prepared to assist prospective investors in making their own evaluation of the Company and does not purport to be all-inclusive or to contain all of the information a prospective or existing investor may desire. In all cases, interested parties should conduct their own investigation and analysis of the Company and the data set forth in this information. The Company makes no representation or warranty as to the accuracy or completeness of this information and shall not have any liability for any representations (express or implied) regarding information contained in, or for any omissions from, this information or any other written or oral communications transmitted to the recipient in the course of its evaluation of the Company. Any financial projections given are illustrative only and none of the projections or assumptions should be taken as promises on the part of the Company nor should they be taken as implying any indication, assurance or guarantee that loose assumptions are correct or exhaustive.

This information includes certain statements and estimates provided by the Company with respect to the projected future performance of the Company. Such statements, estimates and projections reflect various assumptions by management concerning possible anticipated results, which assumptions may or may not be correct. No representations are made as to the accuracy of such statements, estimates or projections. Prospective investors will be expected to have conducted their own due diligence investigation regarding these and all other matters pertinent to investment in the Company. This presentation may contain statements that are not historical facts, referred to as “forward-looking statements.” The Company’s actual future results may differ materially from those suggested by such statements, depending on various factors.